

# Montcalm County



## *Horse and Pony Project Supplement to Record Book*

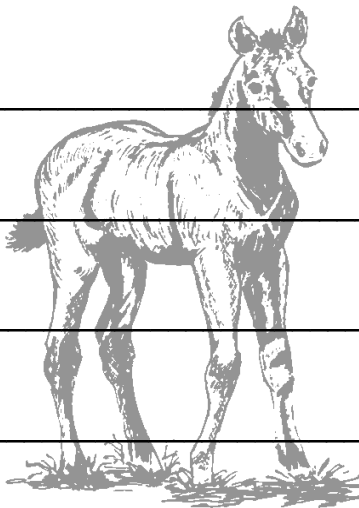
*Novice*

Name: \_\_\_\_\_

Address: \_\_\_\_\_

4-H Club: \_\_\_\_\_

4-H Leader: \_\_\_\_\_



**MICHIGAN STATE** | **Extension**  
**UNIVERSITY**

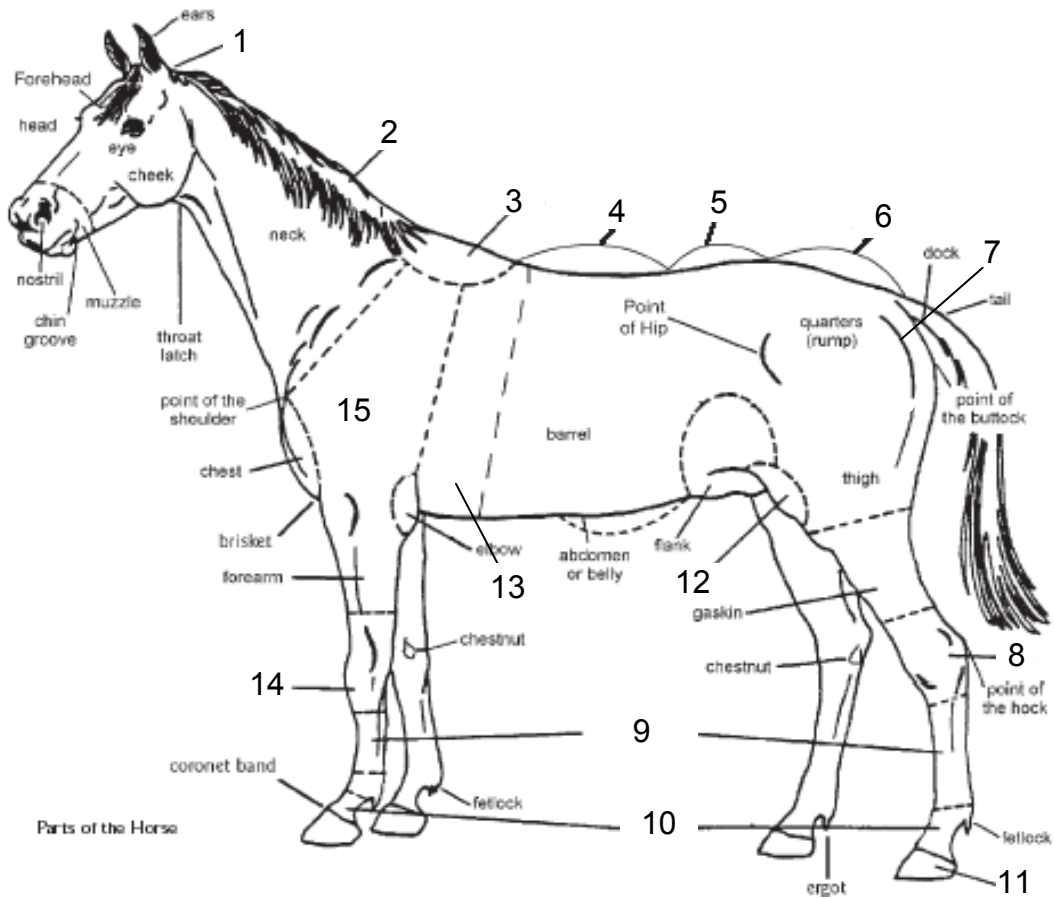


*Michigan State University Extension programs and materials are open to all without regard to race, color, national origin, gender, gender identity, religion, age, height, weight, disability, political beliefs, sexual orientation, marital status, family status or veteran status.*

Rev. 1/2015

## Structure of the Horse

Identify the 15 parts of the horse.



1. \_\_\_\_\_
2. \_\_\_\_\_
3. \_\_\_\_\_
4. \_\_\_\_\_
5. \_\_\_\_\_
6. \_\_\_\_\_
7. \_\_\_\_\_
8. \_\_\_\_\_

9. \_\_\_\_\_
10. \_\_\_\_\_
11. \_\_\_\_\_
12. \_\_\_\_\_
13. \_\_\_\_\_
14. \_\_\_\_\_
15. \_\_\_\_\_

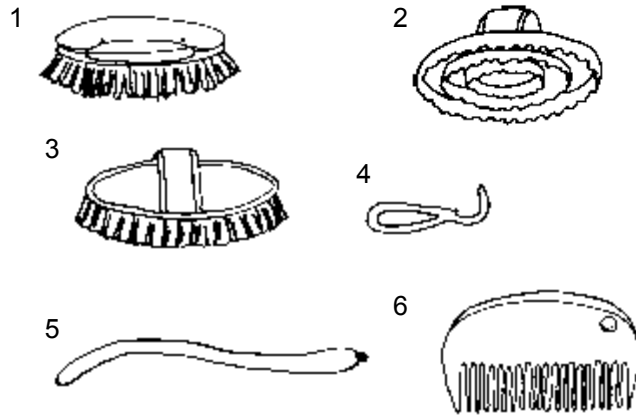
Describe what the coronet is: \_\_\_\_\_

\_\_\_\_\_

## Grooming

Write the correct names of these basic pieces of grooming equipment.

1. \_\_\_\_\_
2. \_\_\_\_\_
3. \_\_\_\_\_
4. \_\_\_\_\_
5. \_\_\_\_\_
6. \_\_\_\_\_



## Breed Issues

List the five (5) major colors of horses:

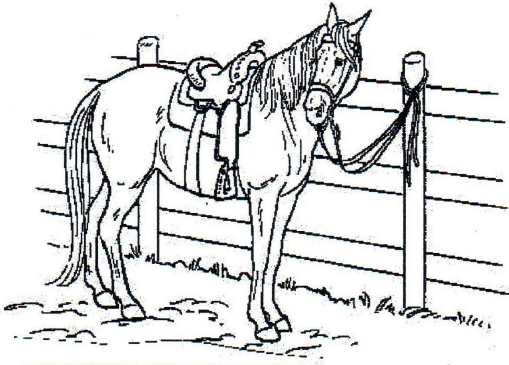
1. \_\_\_\_\_
2. \_\_\_\_\_
3. \_\_\_\_\_
4. \_\_\_\_\_
5. \_\_\_\_\_

List the five (5) color variations:

1. \_\_\_\_\_
2. \_\_\_\_\_
3. \_\_\_\_\_
4. \_\_\_\_\_
5. \_\_\_\_\_

# Safety Issues

Tell what is wrong with each of the pictures.



---

---

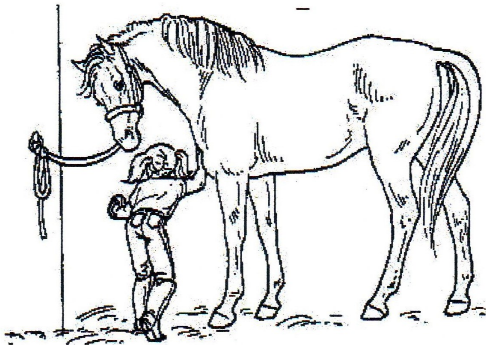
---



---

---

---



---

---

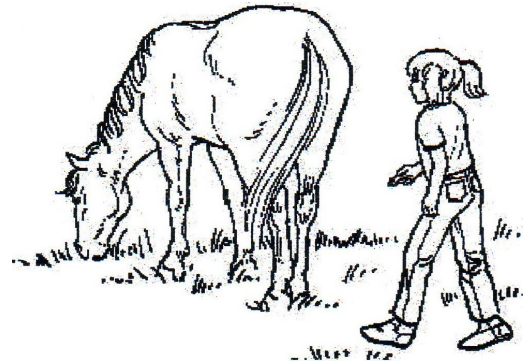
---

---

---

---

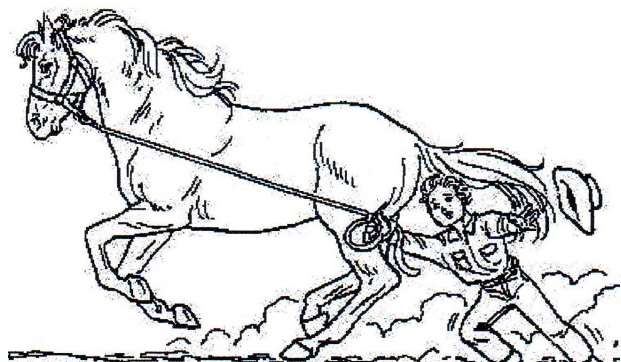
---



---

---

---



## Fun with Horsy Words

### Word Search

Find these words:

Hoof	Horse	Brush	Boot	Veterinarian
Pastern	Saddle	Tack	Club	Dewormer
Feed	Safety	Hay	Blaze	

H	A	Y	F	E	Z	C	L	U	B	S	P
O	O	J	S	A	F	E	T	Y	L	C	A
O	B	R	U	S	H	R	F	S	A	I	S
F	O	D	S	A	D	D	L	E	Z	N	T
G	O	P	D	E	W	O	R	M	E	R	E
U	T	J	K	T	A	C	K	A	Z	D	R
V	E	T	E	R	I	N	A	R	I	A	N

Unscramble these horse terms:

DLDESA \_\_\_\_\_

HRIGT \_\_\_\_\_

NAONCN \_\_\_\_\_

ISKTR \_\_\_\_\_

NOERTOC \_\_\_\_\_

EDE \_\_\_\_\_

NOIL \_\_\_\_\_

LEDRIB \_\_\_\_\_

CKNE \_\_\_\_\_

EAMN \_\_\_\_\_

MOPELM \_\_\_\_\_

THWIERS \_\_\_\_\_

LBEILST \_\_\_\_\_

SAPERNT \_\_\_\_\_

TIB \_\_\_\_\_

KANFL \_\_\_\_\_

RERBLA \_\_\_\_\_

NTCAEL \_\_\_\_\_

CKHO \_\_\_\_\_

NCHCI \_\_\_\_\_

LOFOCKRE \_\_\_\_\_

## Equine Colors and Markings

Using the Horses and Horsemanship manual's chapter on **Color** and **Color Markings** of Horses, fill in the blanks to find out the hidden message.

Position on a football team															
Precious Metal															
A smoldering fire is															
Lone Ranger's horse															
Color of a rainy day															
Sky light															
All Colors															
Sweep-tail															
Black and White horse relative															
Clothing of a jailbird															
Large Fire															

Secret Message:

\_\_\_\_\_